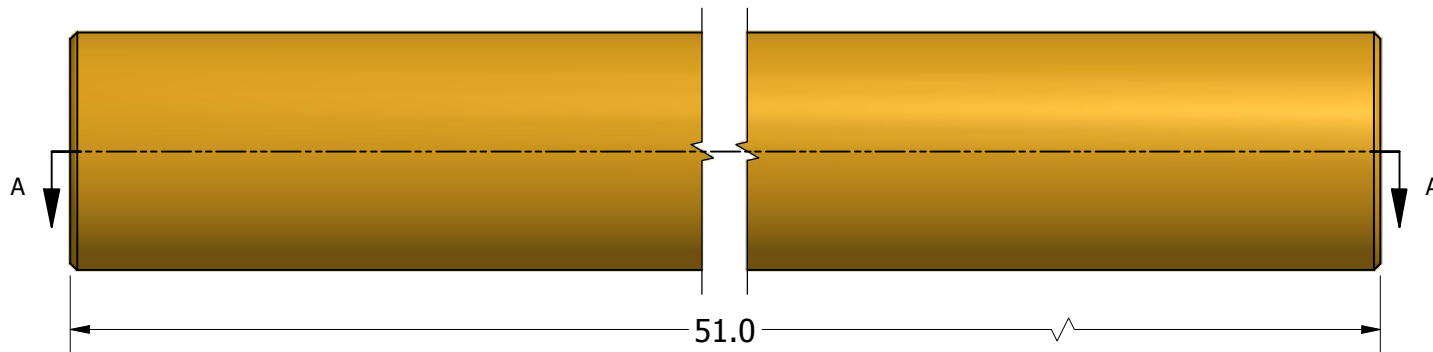
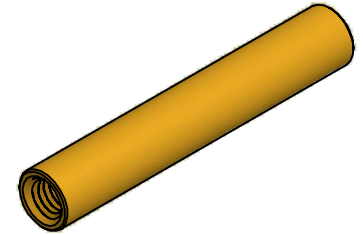
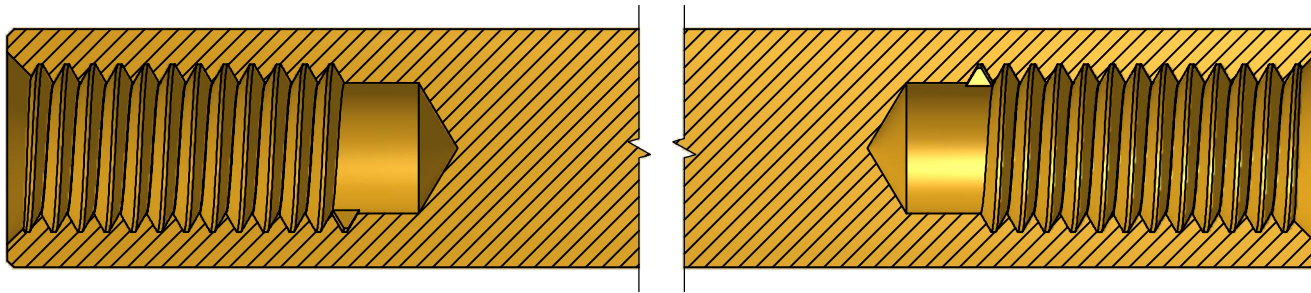
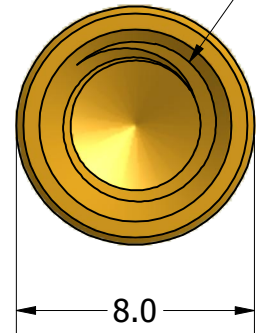


SECTION A-A



M3.0x0.5-6H  
6.4 min (2 Pls)



Tolerances Unless Otherwise Specified:

**.x Decimal:** ± 0.3  
**.xx Decimal:** ± .13  
**Fraction:** ± 1/64  
**Angle:** ± 2°

**LYN-TRON, INC.**

Part Number:  
**BR5073-3050-51.0**

Description:  
**8mm Rnd F/F Standoff**

Drawn By:  
**COURTNEYS01/21/2012**

Gauge:  
**Brass**

Material:  
**Brass**

Scale:  
**NTS**