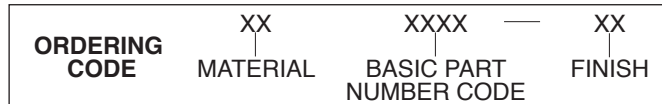
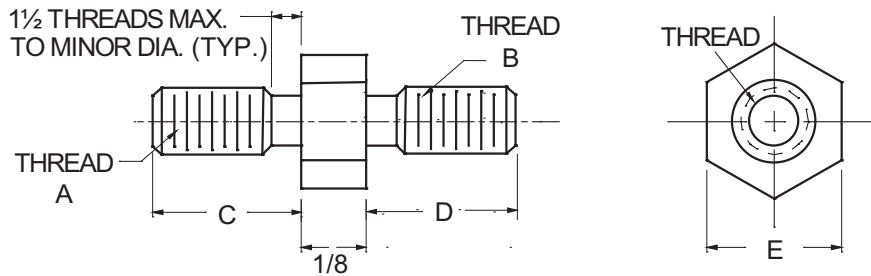




MALE-MALE HEX STANDOFFS



MATERIAL	CODE
ALUMINUM	AL
BRASS	BR
STEEL	ST

NOTE: See Page A4 for additional materials and specifications.

Basic Part Number	THREAD A	THREAD B	LENGTH C	LENGTH D	HEX E
6726	4-40	4-40	3/16	3/16	1/4
6727	4-40	6-32	3/16	1/4	1/4
6728	6-32	6-32	1/4	1/4	1/4
6729	6-32	8-32	1/4	3/8	1/4
6730	8-32	8-32	3/8	3/8	1/4
6731	8-32	10-32	3/8	3/8	1/4
6732	10-32	10-32	3/8	3/8	1/4
6733	8-32	8-32	3/8	3/8	5/16
6734	8-32	10-32	3/8	3/8	5/16
6735	10-32	10-32	3/8	3/8	5/16

CODE	FINISH	CODE	FINISH
00	Plain — None	32	Cadmium QQ-P-416, CL 2 — Color Chromate
01	Passivate ASTM A967-05	33	Black Zinc
02	Caustic Etch	34*	Zinc QQ-Z-325, Type II, CL 3 — Clear Chromate
03	Bright Dip — Brass	35	Zinc QQ-Z-325, Type I, CL 3
11	Anodize MIL-A-8625C, Type I Chromic Hot Water Seal — Dark Grey	36	Zinc QQ-Z-325, Type II, CL 3 — Yellow Chromate
12	Anodize MIL-A-8625C, Type II Sulphuric Hot Water Seal — Clear	42	Electro Tin MIL-T-10727, Type I (Dull)
13	Anodize MIL-A-8625C, Type II Sulphuric Dichromate Seal — Yellow Green	43	Electro Tin MIL-T-10727 C, Type I (Bright)
14	Anodize MIL-A-8625C — Black	44	Electro Tin (Solder) MIL-F-14072 M230/M222
21	Iridite MIL-C-5541 — Clear	48	Copper / Nickel / Bright Tin
22*	Iridite MIL-C-5541 — Gold #14	50	Black Oxide MIL-C-13924 — Steel
25	Clear Iridite -- Class 3 (RoHS) MIL-DTL-5541F	51	Black Oxide MIL-F-495 — Brass
31	Cadmium QQ-P-416, CL 2 — Clear Chromate	52	Black Oxide MIL-C-13924 — Stainless Steel
		63	Ductile Nickel
		66	Electroless Nickel
		91	Silver QQ-S-365

A89

*Standard finishes: Zinc (Clear Chromate) on brass material, Iridite (Gold #14) on aluminum material.



LYN-TRON, INC. 6001 S. THOMAS MALLEN ROAD • SPOKANE, WASHINGTON 99224-9406 • (509) 456-4545 • (800) 423-2734

<http://www.lyntron.com> • e-mail: info@lyntron.com