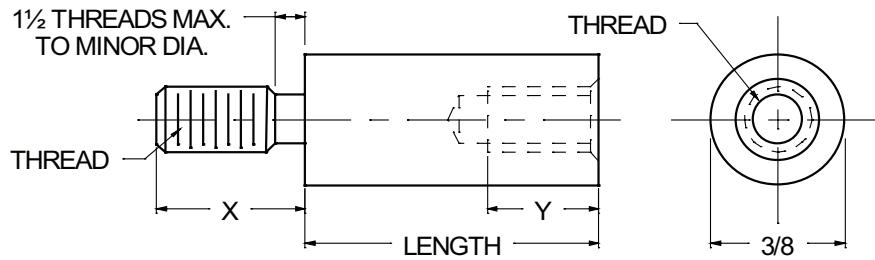




3/8 ROUND MALE-FEMALE STANDOFFS



ORDERING CODE	XX	XXXX	X.XXX	—	XX
	MATERIAL	BASIC PART NUMBER	LENGTH CODE		FINISH

MATERIAL	CODE	LENGTH	CODE	LENGTH	CODE	LENGTH	CODE
ALUMINUM	AL	1/4	0.250	1 1/8	1.125	2 3/8	2.375
BRASS	BR	5/16	0.312	1 3/16	1.187	2 1/2	2.500
STAINLESS STEEL	SS	3/8	0.375	1 1/4	1.250	2 5/8	2.625
STEEL	ST	7/16	0.437	1 5/16	1.312	2 3/4	2.750
		1/2	0.500	1 3/8	1.375	2 7/8	2.875
		9/16	0.562	1 7/16	1.437	3"	3.000
		5/8	0.625	1 1/2	1.500	3 1/4	3.250
		11/16	0.687	1 9/16	1.562	3 1/2	3.500
		3/4	0.750	1 5/8	1.625	3 3/4	3.750
		13/16	0.812	1 11/16	1.687	4"	4.000
		7/8	0.875	1 3/4	1.750	4 1/4	4.250
		15/16	0.937	1 13/16	1.812	4 1/2	4.500
		1"	1.000	1 7/8	1.875	4 3/4	4.750
		1 1/16	1.062	1 15/16	1.937	5"	5.000
				2"	2.000	5 1/4	5.250
				2 1/8	2.125	5 1/2	5.500
				2 1/4	2.250	5 3/4	5.750
						6"	6.000

NOTE: See Page A4 for additional materials and specifications.

BASIC THREAD SIZE	PART NO.
6-32	6884
8-32	6885
10-32	6886

NOTE: Variance in sizes between male and female threads are available.

THREAD SIZE	"X" LENGTH	"Y" MIN. FULL THD. DEPTH	MIN. BODY LENGTH
6-32	1/4	3/8	1/2
8-32	3/8	7/16	9/16
10-32	3/8	1/2	11/16

NOTES:

- In short body lengths "Y" will be tapped to maximum depth.
- Threads longer or shorter than "X" length are available.

CODE	FINISH	CODE	FINISH
00	Plain — None	32	Cadmium QQ-P-416, CL 2 — Color Chromate
01	Passivate ASTM A967-05	33	Black Zinc
02	Caustic Etch	34*	Zinc QQ-Z-325, Type II, CL 3 — Clear Chromate
03	Bright Dip — Brass	35	Zinc QQ-Z-325, Type I, CL 3
11	Anodize MIL-A-8625C, Type I Chromic Hot Water Seal — Dark Grey	36	Zinc QQ-Z-325, Type II, CL 3 — Yellow Chromate
12	Anodize MIL-A-8625C, Type II Sulphuric Hot Water Seal — Clear	42	Electro Tin MIL-T-10727, Type I (Dull)
13	Anodize MIL-A-8625C, Type II Sulphuric Dichromate Seal — Yellow Green	43	Electro Tin MIL-T-10727 C, Type I (Bright)
14	Anodize MIL-A-8625C — Black	44	Electro Tin (Solder) MIL-F-14072 M230/M222
21	Iridite MIL-C-5541 — Clear	48	Copper / Nickel / Bright Tin
22*	Iridite MIL-C-5541 — Gold #14	50	Black Oxide MIL-C-13924 — Steel
25	Clear Iridite -- Class 3 (RoHS) MIL-DTL-5541F	51	Black Oxide MIL-F-495 — Brass
31	Cadmium QQ-P-416, CL 2 — Clear Chromate	52	Black Oxide MIL-C-13924 — Stainless Steel
		61	Nickel QQ-N-290 CL 1, Type VI KC
		63	Ductile Nickel
		66	Electroless Nickel
		91	Silver QQ-S-365

*Standard finishes: Zinc (Clear Chromate) on brass material, Iridite (Gold #14) on aluminum material.