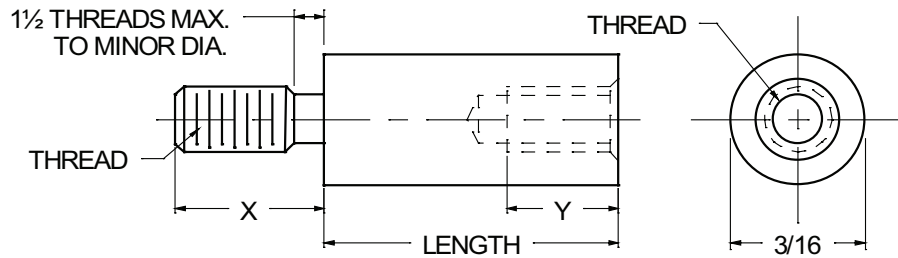




# 3/16 ROUND MALE-FEMALE STANDOFFS



<b>ORDERING CODE</b>	XX	XXXX	X.XXX	—	XX
	MATERIAL	BASIC PART NUMBER	LENGTH CODE		FINISH

MATERIAL	CODE
ALUMINUM	AL
BRASS	BR
STAINLESS STEEL	SS
STEEL	ST

NOTE: See Page A4 for additional materials and specifications.

BASIC THREAD SIZE	PART NO.
2-56	6878
4-40	6879
6-32	6877

NOTE: Variance in sizes between male and female threads are available.

LENGTH	CODE	LENGTH	CODE
3/16	0.187	1"	1.000
1/4	0.250	1 1/16	1.062
5/16	0.312	1 1/8	1.125
3/8	0.375	1 3/16	1.187
7/16	0.437	1 1/4	1.250
1/2	0.500	1 5/16	1.312
9/16	0.562	1 3/8	1.375
5/8	0.625	1 7/16	1.437
11/16	0.687	1 1/2	1.500
3/4	0.750	1 9/16	1.562
13/16	0.812	1 5/8	1.625
7/8	0.875	1 11/16	1.687
15/16	0.937	1 3/4	1.750
		1 13/16	1.812
		1 7/8	1.875
		1 15/16	1.937
		2"	2.000

THREAD SIZE	"X" LENGTH	"Y" MIN. FULL THD. DEPTH	MIN. BODY LENGTH
2-56	5/32	3/16	5/16
4-40	3/16	1/4	3/8
6-32	1/4	3/8	1/2

NOTES:

- In short body lengths "Y" will be tapped to maximum depth.
- Threads longer or shorter than "X" length are available.

CODE	FINISH	CODE	FINISH
00	Plain — None	32	Cadmium QQ-P-416, CL 2 — Color Chromate
01	Passivate ASTM A967-05	33	Black Zinc
02	Caustic Etch	34*	Zinc QQ-Z-325, Type II, CL 3 — Clear Chromate
03	Bright Dip — Brass	35	Zinc QQ-Z-325, Type I, CL 3
11	Anodize MIL-A-8625C, Type I Chromic Hot Water Seal — Dark Grey	36	Zinc QQ-Z-325, Type II, CL 3 — Yellow Chromate
12	Anodize MIL-A-8625C, Type II Sulphuric Hot Water Seal — Clear	42	Electro Tin MIL-T-10727, Type I (Dull)
13	Anodize MIL-A-8625C, Type II Sulphuric Dichromate Seal — Yellow Green	43	Electro Tin MIL-T-10727 C, Type I (Bright)
14	Anodize MIL-A-8625C — Black	44	Electro Tin (Solder) MIL-F-14072 M230/M222
21	Iridite MIL-C-5541 — Clear	48	Copper / Nickel / Bright Tin
22*	Iridite MIL-C-5541 — Gold #14	50	Black Oxide MIL-C-13924 — Steel
25	Clear Iridite -- Class 3 (RoHS) MIL-DTL-5541F	51	Black Oxide MIL-F-495 — Brass
31	Cadmium QQ-P-416, CL 2 — Clear Chromate	52	Black Oxide MIL-C-13924 — Stainless Steel
		61	Nickel QQ-N-290 CL 1, Type VI KC
		63	Ductile Nickel
		66	Electroless Nickel
		91	Silver QQ-S-365

\*Standard finishes: Zinc (Clear Chromate) on brass material, Iridite (Gold #14) on aluminum material.

**A77**



LYN-TRON, INC. 6001 S. THOMAS MALLEN ROAD • SPOKANE, WASHINGTON 99224-9406 • (509) 456-4545 • (800) 423-2734

http://www.lyntron.com • e-mail: info@lyntron.com