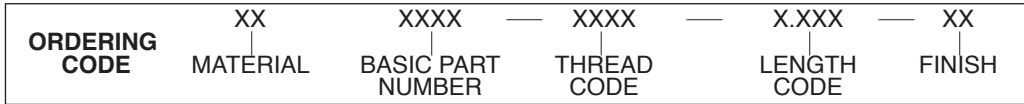
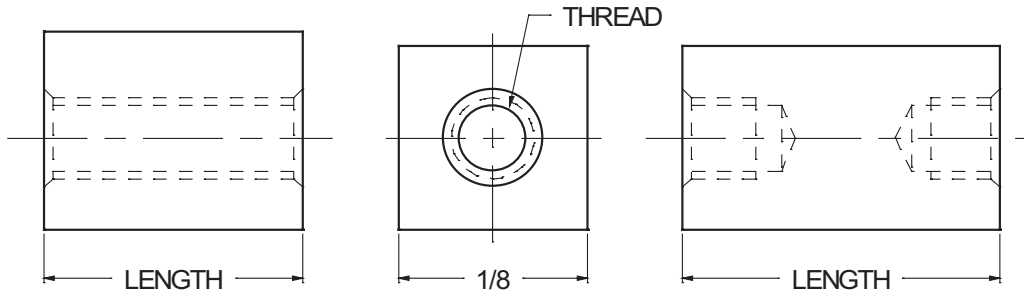




# 1/8 SQUARE STANDOFFS



MATERIAL	CODE
BRASS	<b>BR</b>
STAINLESS STEEL	<b>SS</b>

NOTE: See Page A4 for additional materials and specifications.

BASIC PART NO.
<b>6968</b>

THREAD SIZE	CODE
0-80	<b>0080</b>
2-56	<b>0256</b>

LENGTH	CODE
1/8	<b>0.125</b>
3/16	<b>0.187</b>
1/4	<b>0.250</b>
5/16	<b>0.312</b>
3/8	<b>0.375</b>
7/16	<b>0.437</b>
1/2	<b>0.500</b>
9/16	<b>0.562</b>
5/8	<b>0.625</b>
11/16	<b>0.687</b>
3/4	<b>0.750</b>
13/16	<b>0.812</b>
7/8	<b>0.875</b>
15/16	<b>0.937</b>
1"	<b>1.000</b>

NOTE: For thread depth chart see Page A4.

CODE	FINISH	CODE	FINISH
<b>00</b>	Plain — None	<b>32</b>	Cadmium QQ-P-416, CL 2 — Color Chromate
<b>01</b>	Passivate ASTM A967-05	<b>33</b>	Black Zinc
<b>02</b>	Caustic Etch	<b>34*</b>	Zinc QQ-Z-325, Type II, CL 3 — Clear Chromate
<b>03</b>	Bright Dip — Brass	<b>35</b>	Zinc QQ-Z-325, Type I, CL 3
<b>11</b>	Anodize MIL-A-8625C, Type I Chromic Hot Water Seal — Dark Grey	<b>36</b>	Zinc QQ-Z-325, Type II, CL 3 — Yellow Chromate
<b>12</b>	Anodize MIL-A-8625C, Type II Sulphuric Hot Water Seal — Clear	<b>42</b>	Electro Tin MIL-T-10727, Type I (Dull)
<b>13</b>	Anodize MIL-A-8625C, Type II Sulphuric Dichromate Seal — Yellow Green	<b>43</b>	Electro Tin MIL-T-10727 C, Type I (Bright)
<b>14</b>	Anodize MIL-A-8625C — Black	<b>44</b>	Electro Tin (Solder) MIL-F-14072 M230/M222
<b>21</b>	Iridite MIL-C-5541 — Clear	<b>48</b>	Copper / Nickel / Bright Tin
<b>22*</b>	Iridite MIL-C-5541 — Gold #14	<b>50</b>	Black Oxide MIL-C-13924 — Steel
<b>25</b>	Clear Iridite -- Class 3 (RoHS) MIL-DTL-5541F	<b>51</b>	Black Oxide MIL-F-495 — Brass
<b>31</b>	Cadmium QQ-P-416, CL 2 — Clear Chromate	<b>52</b>	Black Oxide MIL-C-13924 — Stainless Steel
		<b>61</b>	Nickel QQ-N-290 CL 1, Type VI KC
		<b>63</b>	Ductile Nickel
		<b>66</b>	Electroless Nickel
		<b>91</b>	Silver QQ-S-365

\*Standard finishes: Zinc (Clear Chromate) on brass material, Iridite (Gold #14) on aluminum material.