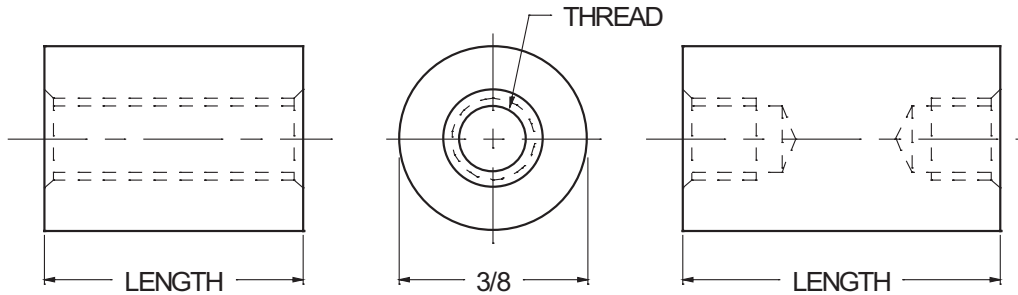




3/8 ROUND STANDOFFS



ORDERING CODE	XX	XXXX	XXXX	X.XXX	XX
	MATERIAL	BASIC PART NUMBER	THREAD CODE	LENGTH CODE	FINISH

MATERIAL	CODE
ALUMINUM	AL
BRASS	BR
NYLON	NY
STAINLESS STEEL	SS
STEEL	ST

NOTE: See Page A4 for additional materials and specifications.

BASIC PART NO.
6943

THREAD SIZE	CODE
6-32	0632
8-32	0832
10-32	1032
12-24	1224

NOTE: For thread depth chart see Page A4.

LENGTH	CODE	LENGTH	CODE	LENGTH	CODE
1/8	0.125	1 9/16	1.562	5"	5.000
3/16	0.187	1 5/8	1.625	5 1/4	5.250
1/4	0.250	1 11/16	1.687	5 1/2	5.500
5/16	0.312	1 3/4	1.750	5 3/4	5.750
3/8	0.375	1 13/16	1.812	6"	6.000
7/16	0.437	1 7/8	1.875	6 1/4	6.250
1/2	0.500	1 15/16	1.937	6 1/2	6.500
9/16	0.562	2"	2.000	6 3/4	6.750
5/8	0.625	2 1/8	2.125	7"	7.000
11/16	0.687	2 1/4	2.250	7 1/4	7.250
3/4	0.750	2 3/8	2.375	7 1/2	7.500
13/16	0.812	2 1/2	2.500	7 3/4	7.750
7/8	0.875	2 5/8	2.625	8"	8.000
15/16	0.937	2 3/4	2.750	8 1/4	8.250
1"	1.000	2 7/8	2.875	8 1/2	8.500
1 1/16	1.062	3"	3.000	8 3/4	8.750
1 1/8	1.125	3 1/4	3.250	9"	9.000
1 3/16	1.187	3 1/2	3.500	9 1/4	9.250
1 1/4	1.250	3 3/4	3.750	9 1/2	9.500
1 5/16	1.312	4"	4.000	9 3/4	9.750
1 3/8	1.375	4 1/4	4.250	10"	10.000
1 7/16	1.437	4 1/2	4.500		
1 1/2	1.500	4 3/4	4.750		

CODE	FINISH	CODE	FINISH
00	Plain — None	32	Cadmium QQ-P-416, CL 2 — Color Chromate
01	Passivate ASTM A967-05	33	Black Zinc
02	Caustic Etch	34*	Zinc QQ-Z-325, Type II, CL 3 — Clear Chromate
03	Bright Dip — Brass	35	Zinc QQ-Z-325, Type I, CL 3
11	Anodize MIL-A-8625C, Type I Chromic Hot Water Seal — Dark Grey	36	Zinc QQ-Z-325, Type II, CL 3 — Yellow Chromate
12	Anodize MIL-A-8625C, Type II Sulphuric Hot Water Seal — Clear	42	Electro Tin MIL-T-10727, Type I (Dull)
13	Anodize MIL-A-8625C, Type II Sulphuric Dichromate Seal — Yellow Green	43	Electro Tin MIL-T-10727 C, Type I (Bright)
14	Anodize MIL-A-8625C — Black	44	Electro Tin (Solder) MIL-F-14072 M230/M222
21	Iridite MIL-C-5541 — Clear	48	Copper / Nickel / Bright Tin
22*	Iridite MIL-C-5541 — Gold #14	50	Black Oxide MIL-C-13924 — Steel
25	Clear Iridite -- Class 3 (RoHS) MIL-DTL-5541F	51	Black Oxide MIL-F-495 — Brass
31	Cadmium QQ-P-416, CL 2 — Clear Chromate	52	Black Oxide MIL-C-13924 — Stainless Steel
		61	Nickel QQ-N-290 CL 1, Type VI KC
		63	Ductile Nickel
		66	Electroless Nickel
		91	Silver QQ-S-365

*Standard finishes: Zinc (Clear Chromate) on brass material, Iridite (Gold #14) on aluminum material.