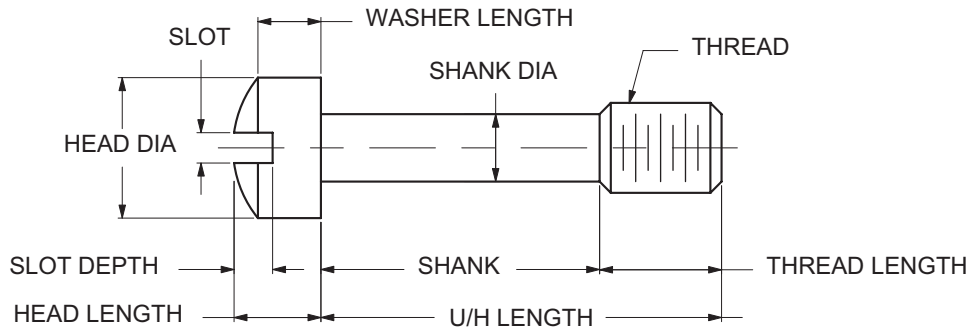


METRIC CAPTIVE PANEL SCREW TYPE 4

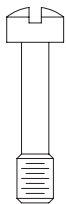


ORDERING CODE	XX	XXXX	XX
	MATERIAL	BASIC PART	FINISH
CODE	FINISH		
00	Plain — None		
01	Passivate ASTM A967-05		
61	Nickel QQ-N-290 CL 1, Type VI KC		

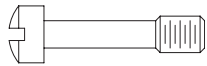
MATERIAL	CODE
BRASS	BR
STAINLESS STEEL	SS
STEEL	ST

Additional Finishes Available

BASIC PART NUMBER	THREAD	HEAD DIA ±0.2	HEAD LENGTH +0.0 -0.4	UNDER HEAD LENGTH ±0.5	THREAD LENGTH ±0.3	SHANK DIA ±0.15	SHANK LENGTH ±0.3	WASHER LENGTH +0.0 -0.3	SLOT WIDTH +0.0 -0.3	SLOT DEPTH +0.0 -0.4
5783	M3X0.5	4.3	2.7	6.5	4.8	2	1.7	2	1	1.2
5784	M3X0.5	4.3	2.7	8	4.8	2	3.2	2	1	1.2
5785	M3X0.5	4.3	2.7	9.5	4.8	2	4.7	2	1	1.2
5786	M3X0.5	4.3	2.7	11	4.8	2	6.2	2	1	1.2
5787	M3X0.5	4.3	2.7	13	4.8	2	8.2	2	1	1.2
5788	M3X0.5	4.3	2.7	14.5	4.8	2	9.7	2	1	1.2
5789	M3X0.5	4.3	2.7	16	4.8	2	11.2	2	1	1.2
5790	M3X0.5	4.3	2.7	17.5	4.8	2	12.7	2	1	1.2
5791	M3X0.5	4.3	2.7	19	4.8	2	14.2	2	1	1.2
5792	M3X0.5	4.3	2.7	20.5	4.8	2	15.7	2	1	1.2
5793	M3X0.5	4.3	2.7	22	4.8	2	17.2	2	1	1.2
5794	M3X0.5	4.3	2.7	24	4.8	2	19.2	2	1	1.2
5795	M3X0.5	4.3	2.7	25.5	4.8	2	20.7	2	1	1.2
5796	M3.5X0.6	5.5	3.3	8	5.5	2.4	2.5	2.4	1.2	1.5
5797	M3.5X0.6	5.5	3.3	9.5	5.5	2.4	4	2.4	1.2	1.5
5798	M3.5X0.6	5.5	3.3	11	5.5	2.4	5.5	2.4	1.2	1.5
5799	M3.5X0.6	5.5	3.3	13	5.5	2.4	7.5	2.4	1.2	1.5
5800	M3.5X0.6	5.5	3.3	14.5	5.5	2.4	9	2.4	1.2	1.5
5801	M3.5X0.6	5.5	3.3	16	5.5	2.4	10.5	2.4	1.2	1.5
5802	M3.5X0.6	5.5	3.3	17.5	5.5	2.4	12	2.4	1.2	1.5
5803	M3.5X0.6	5.5	3.3	19	5.5	2.4	13.5	2.4	1.2	1.5
5804	M3.5X0.6	5.5	3.3	20.5	5.5	2.4	15	2.4	1.2	1.5
5805	M3.5X0.6	5.5	3.3	22	5.5	2.4	16.5	2.4	1.2	1.5
5806	M3.5X0.6	5.5	3.3	24	5.5	2.4	18.5	2.4	1.2	1.5
5807	M3.5X0.6	5.5	3.3	25.5	5.5	2.4	20	2.4	1.2	1.5

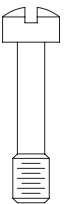


D9



METRIC CAPTIVE PANEL SCREW TYPE 4

BASIC PART NUMBER	THREAD	HEAD DIA ±0.2	HEAD LENGTH +0.0 -0.4	UNDER HEAD LENGTH ±0.5	THREAD LENGTH ±0.3	SHANK DIA ±0.15	SHANK LENGTH ±0.3	WASHER LENGTH +0.0 -0.3	SLOT WIDTH +0.0 -0.3	SLOT DEPTH +0.0 -0.4
5808	M4X0.7	6.4	4	8	5.5	3	2.5	2.9	1.4	1.8
5809	M4X0.7	6.4	4	9.5	5.5	3	4	2.9	1.4	1.8
5810	M4X0.7	6.4	4	11	5.5	3	5.5	2.9	1.4	1.8
5811	M4X0.7	6.4	4	13	5.5	3	7.5	2.9	1.4	1.8
5812	M4X0.7	6.4	4	14.5	5.5	3	9	2.9	1.4	1.8
5813	M4X0.7	6.4	4	16	5.5	3	10.5	2.9	1.4	1.8
5814	M4X0.7	6.4	4	17.5	5.5	3	12	2.9	1.4	1.8
5815	M4X0.7	6.4	4	19	5.5	3	13.5	2.9	1.4	1.8
5816	M4X0.7	6.4	4	20.5	5.5	3	15	2.9	1.4	1.8
5817	M4X0.7	6.4	4	22	5.5	3	16.5	2.9	1.4	1.8
5818	M4X0.7	6.4	4	24	5.5	3	18.5	2.9	1.4	1.8
5819	M4X0.7	6.4	4	25.5	5.5	3	20	2.9	1.4	1.8
5820	M4X0.7	6.4	4	27	5.5	3	21.5	2.9	1.4	1.8
5821	M4X0.7	6.4	4	28.5	5.5	3	23	2.9	1.4	1.8
5822	M4X0.7	6.4	4	30.5	5.5	3	25	2.9	1.4	1.8
5823	M4X0.7	6.4	4	32	5.5	3	26.5	2.9	1.4	1.8
5824	M5X0.8	8	4.6	9.5	7.1	3.3	2.4	3.3	1.5	2.1
5825	M5X0.8	8	4.6	11	7.1	3.3	4	3.3	1.5	2.1
5826	M5X0.8	8	4.6	13	7.1	3.3	5.9	3.3	1.5	2.1
5827	M5X0.8	8	4.6	14.5	7.1	3.3	7.4	3.3	1.5	2.1
5828	M5X0.8	8	4.6	16	7.1	3.3	8.9	3.3	1.5	2.1
5829	M5X0.8	8	4.6	17.5	7.1	3.3	10.4	3.3	1.5	2.1
5830	M5X0.8	8	4.6	19	7.1	3.3	11.9	3.3	1.5	2.1
5831	M5X0.8	8	4.6	20.5	7.1	3.3	13.4	3.3	1.5	2.1
5832	M5X0.8	8	4.6	22	7.1	3.3	14.9	3.3	1.5	2.1
5833	M5X0.8	8	4.6	24	7.1	3.3	16.9	3.3	1.5	2.1
5834	M5X0.8	8	4.6	25.5	7.1	3.3	18.4	3.3	1.5	2.1
5835	M5X0.8	8	4.6	27	7.1	3.3	19.9	3.3	1.5	2.1
5836	M5X0.8	8	4.6	28.5	7.1	3.3	21.4	3.3	1.5	2.1
5837	M5X0.8	8	4.6	30.5	7.1	3.3	23.4	3.3	1.5	2.1
5838	M5X0.8	8	4.6	32	7.1	3.3	24.9	3.3	1.5	2.1
5839	M5X0.8	8	4.6	33.5	7.1	3.3	26.4	3.3	1.5	2.1
5840	M5X0.8	8	4.6	35	7.1	3.3	27.9	3.3	1.5	2.1
5841	M5X0.8	8	4.6	36.5	7.1	3.3	29.4	3.3	1.5	2.1
5842	M5X0.8	8	4.6	38	7.1	3.3	30.9	3.3	1.5	2.1



D10