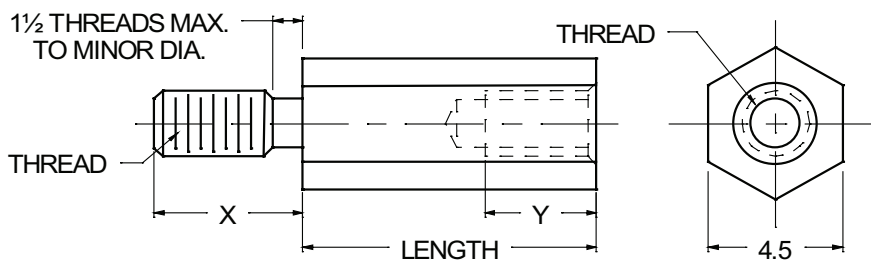




4.5mm HEX MALE-FEMALE STANDOFFS



ORDERING CODE	XX	XXXX	XX.X	—	XX
	MATERIAL	BASIC PART NUMBER	LENGTH CODE		FINISH

MATERIAL	CODE
ALUMINUM	AL
BRASS	BR

NOTE: See Page B2 for additional materials and specifications.

BASIC THREAD SIZE	PART NO.
M2.5 x 0.45	5170
M3.0 x 0.5	5171

NOTE: Variance in sizes between male and female threads are available.

LENGTH mm	CODE	LENGTH mm	CODE
5	05.0	27	27.0
6	06.0	29	29.0
8	08.0	30	30.0
10	10.0	32	32.0
11	11.0	33	33.0
12	12.0	35	35.0
13	13.0	37	37.0
14	14.0	38	38.0
16	16.0	40	40.0
19	19.0	41	41.0
20	20.0	44	44.0
22	22.0	45	45.0
25	25.0	48	48.0
		51	51.0

NOTE: For lengths not listed, contact Lyn-Tron, Inc.

THREAD SIZE	"X" LENGTH	"Y" MIN. FULL THD. DEPTH	MIN. BODY LENGTH
M2.5 x 0.45	3.97	4.76	8.0
M3.0 x 0.5	4.76	6.35	9.0

- NOTES: 1. See page B2 for recommended "Y" thread depth where length is less than minimum body length shown on chart to left.
 2. Threads longer or shorter than "X" length are available.

CODE	FINISH	CODE	FINISH
00	Plain — None	32	Cadmium QQ-P-416, CL 2 — Color Chromate
01	Passivate ASTM A967-05	33	Black Zinc
02	Caustic Etch	34*	Zinc QQ-Z-325, Type II, CL 3 — Clear Chromate
03	Bright Dip — Brass	35	Zinc QQ-Z-325, Type I, CL 3
11	Anodize MIL-A-8625C, Type I Chromic Hot Water Seal — Dark Grey	36	Zinc QQ-Z-325, Type II, CL 3 — Yellow Chromate
12	Anodize MIL-A-8625C, Type II Sulphuric Hot Water Seal — Clear	42	Electro Tin MIL-T-10727, Type I (Dull)
13	Anodize MIL-A-8625C, Type II Sulphuric Dichromate Seal — Yellow Green	43	Electro Tin MIL-T-10727 C, Type I (Bright)
14	Anodize MIL-A-8625C — Black	44	Electro Tin (Solder) MIL-F-14072 M230/M222
21	Iridite MIL-C-5541 — Clear	48	Copper / Nickel / Bright Tin
22*	Iridite MIL-C-5541 — Gold #14	50	Black Oxide MIL-C-13924 — Steel
25	Clear Iridite -- Class 3 (RoHS) MIL-DTL-5541F	51	Black Oxide MIL-F-495 — Brass
31	Cadmium QQ-P-416, CL 2 — Clear Chromate	52	Black Oxide MIL-C-13924 — Stainless Steel
		61	Nickel QQ-N-290 CL 1, Type VI KC
		63	Ductile Nickel
		66	Electroless Nickel
		91	Silver QQ-S-365

B22

*Standard finishes: Zinc (Clear Chromate) on brass material, Iridite (Gold #14) on aluminum material.